



The future of APS is here  
Introducing **PlanetTogether APS V12**

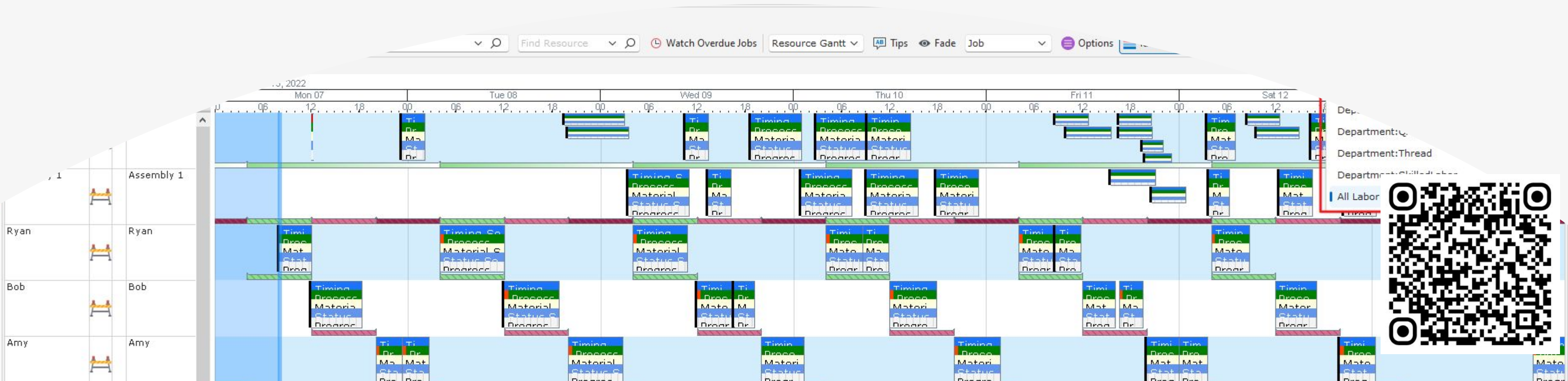




New feature  
development  
will be on V12

Roadmap maintained in the Knowledge Base

# The Future is Version 12





Q2 2024

## Features Released

---



**Splitting Operations  
Across Resources**



**Cleans as an  
Activity Segment**



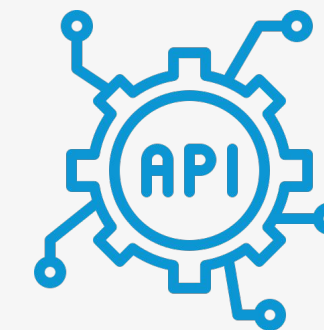
**Reporting Web  
Application**



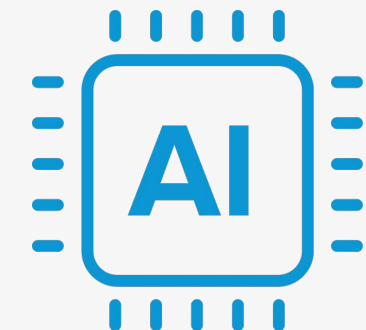
**Web-based Gantt  
Schedule View**



**Data Integration Wizard  
Phase 1 – Excel Import**



**REST API for  
Data Import**



**AI Factory  
Builder**



# Splitting Operations Across Resources

**Problem Statement:** Splitting operations and moving to available resources has limitations.

**Solution:**

- Fix issue with a split operation not able to be moved to a smaller capacity resource
- Allow operations to be split by volume

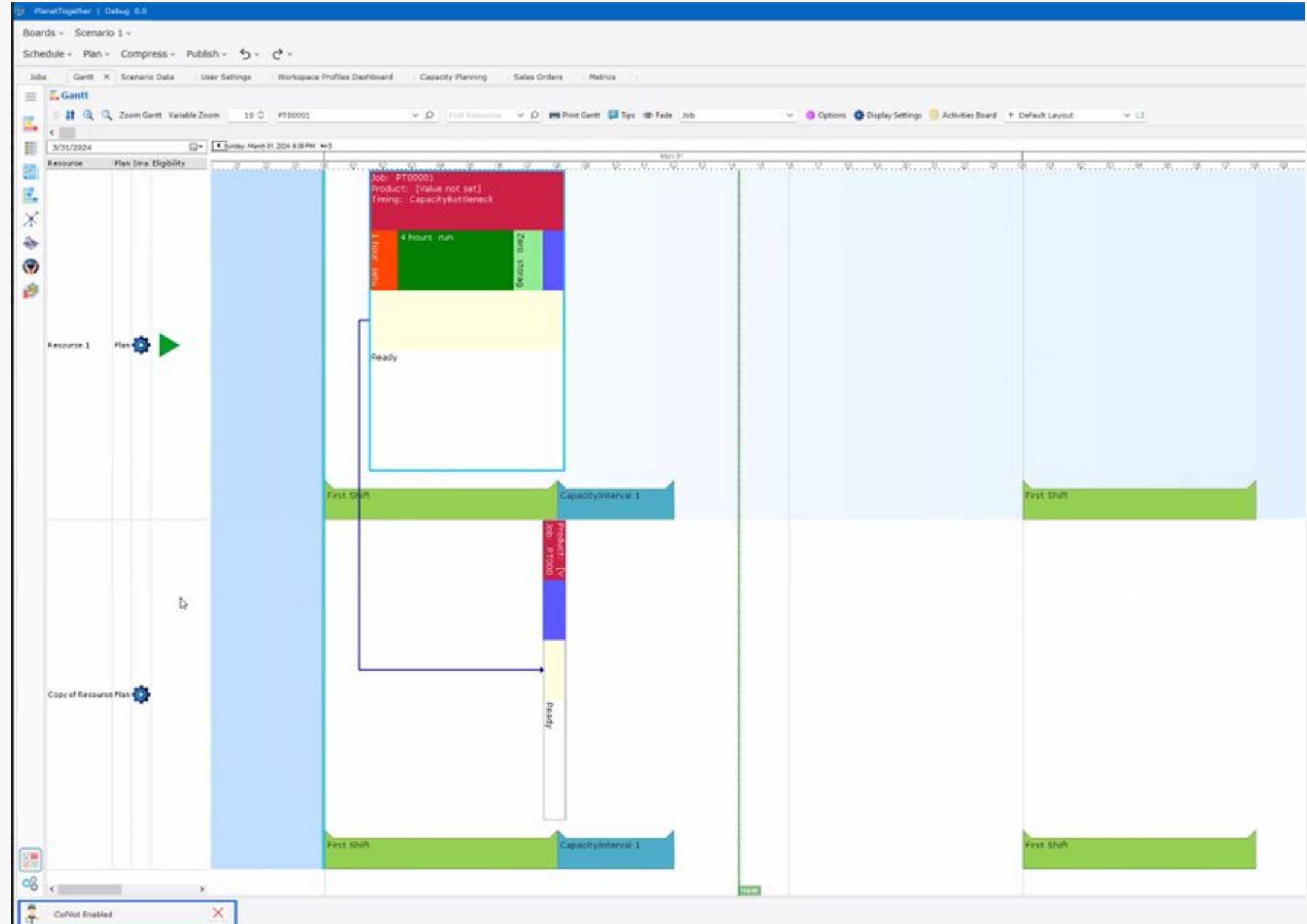


# Clean as an Activity Segment

**Problem Statement:** Cleans cannot be modeled at the end of activities.

**Solution:**

- Create a new state in the activity process – Setup, Processing, Post-Processing and Clean.
- Cleans to be calculated based on Time and Quantity.
- Cleans to be calculated by Cycle/duration, Product SKU and Attribute.



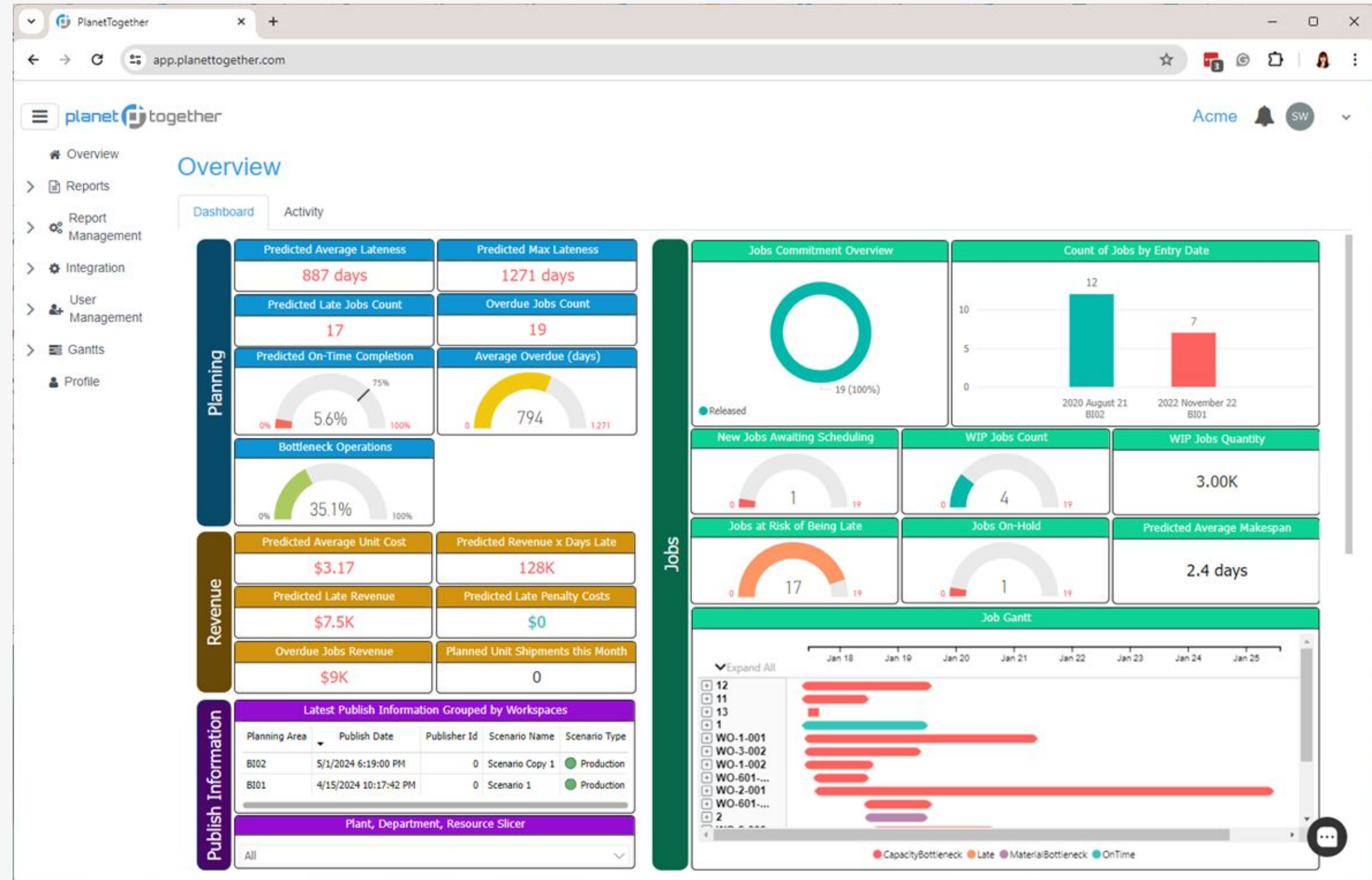


# Reporting Web Application

**Problem Statement:** Customers don't have a web view to see published data. Only Schedulers have visibility into the data.

## Solution:

- Create a web-based view using Power BI embedded that displays published data.
- Role-based users that extend beyond Schedulers – managers, plant floor, etc.



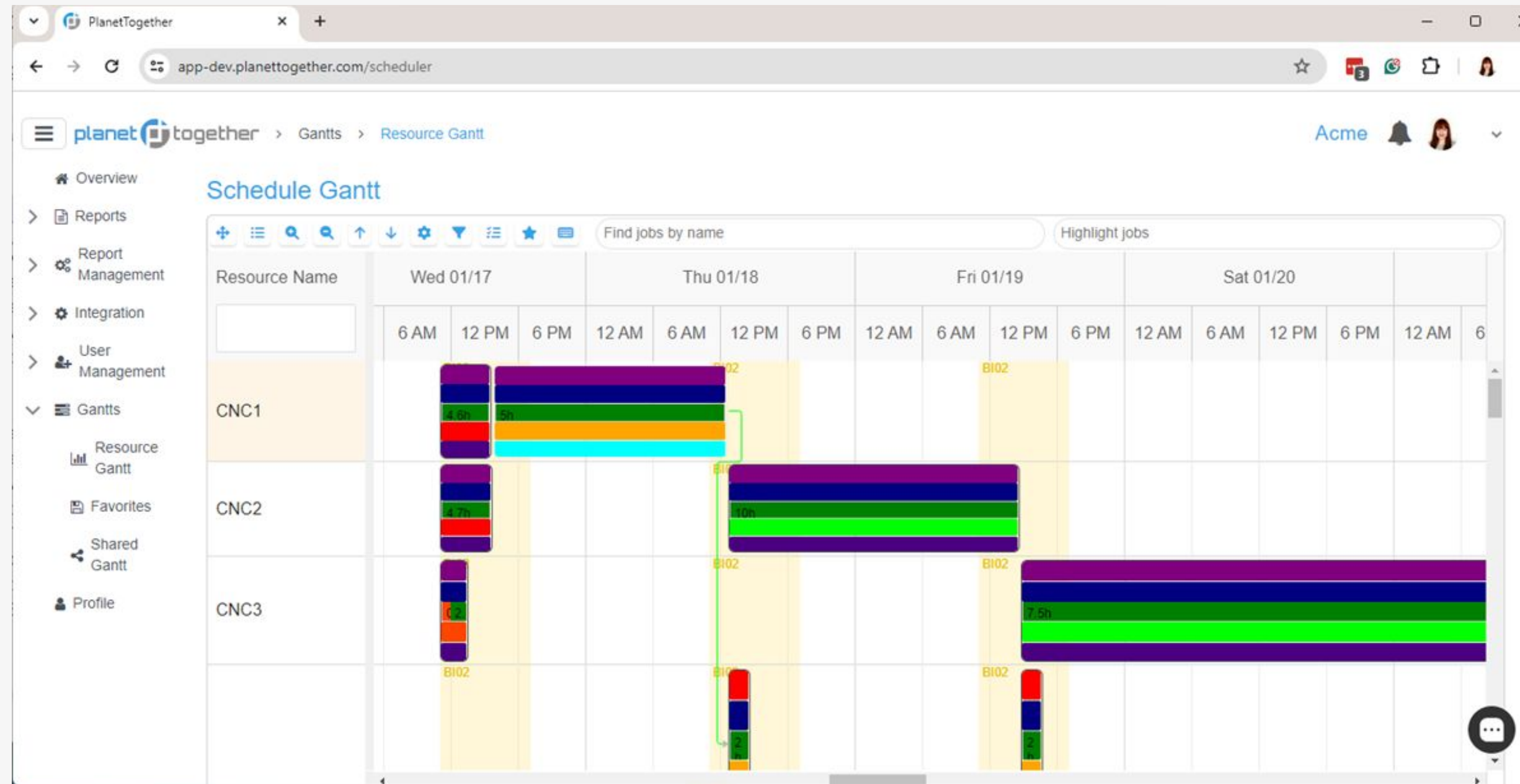


# Gantt in Web Application

**Problem Statement:** Customers don't have a web view to see published schedules in a Gantt layout. Only Schedulers have visibility into the data.

**Solution:**

- Create a web-based view-only Gantt for the schedule.





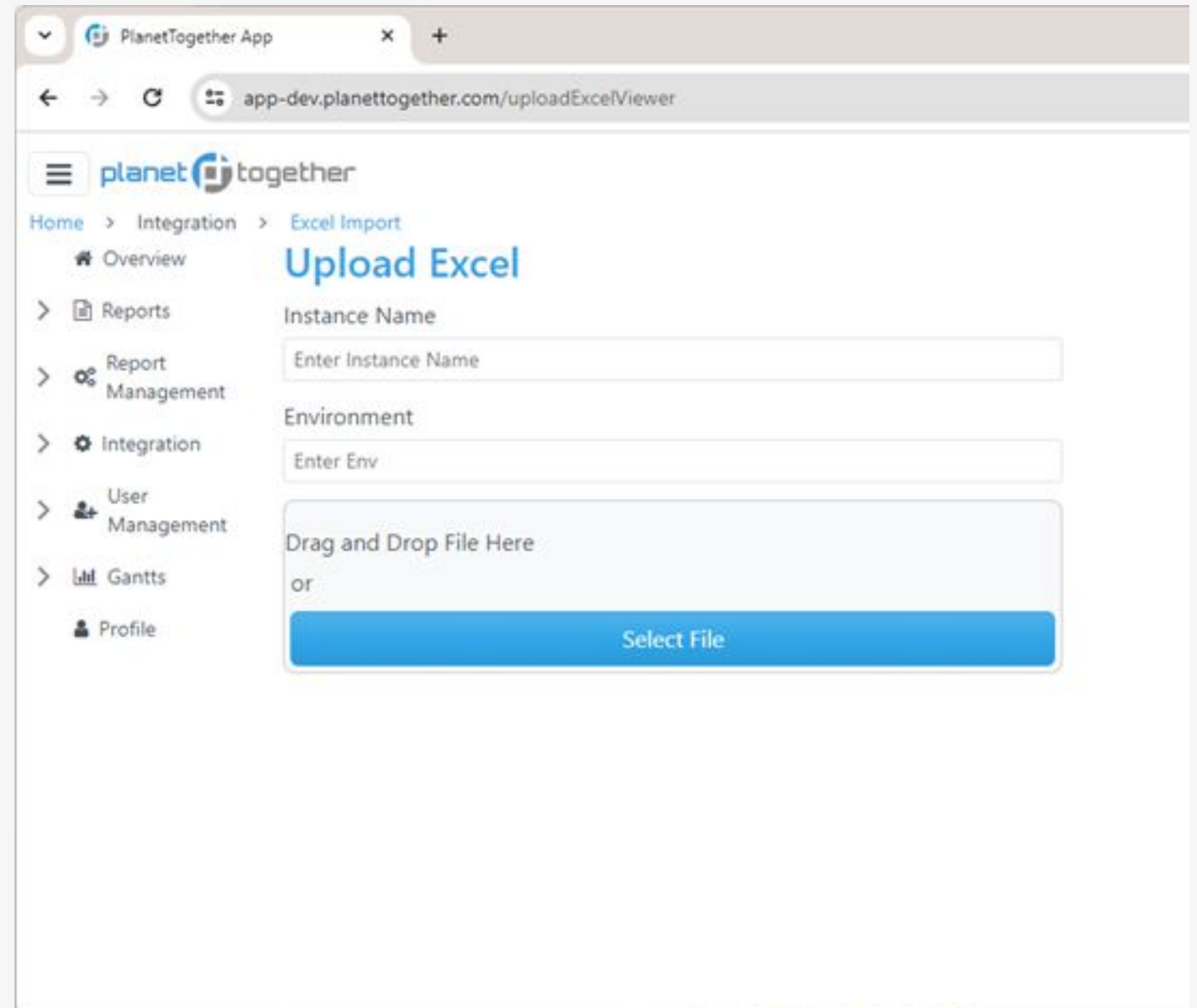
# Data Integration Wizard Phase 1 – Excel Import

---

**Problem Statement:** Cloud Customers have limited options to view, perform transformations and import data.

**Solution:**

- Create web interface to view data in integration database.
- Create import for excel spreadsheets to integration database.







# REST APIs for Data Import

**Problem Statement:** There are not standardized web endpoints that third parties can use to develop integrations with PlanetTogether

**Solution:**

- Create Industry Standard REST APIs for the import of data into a staging import database.
- Use Industry Standard tools for API security and documentation.

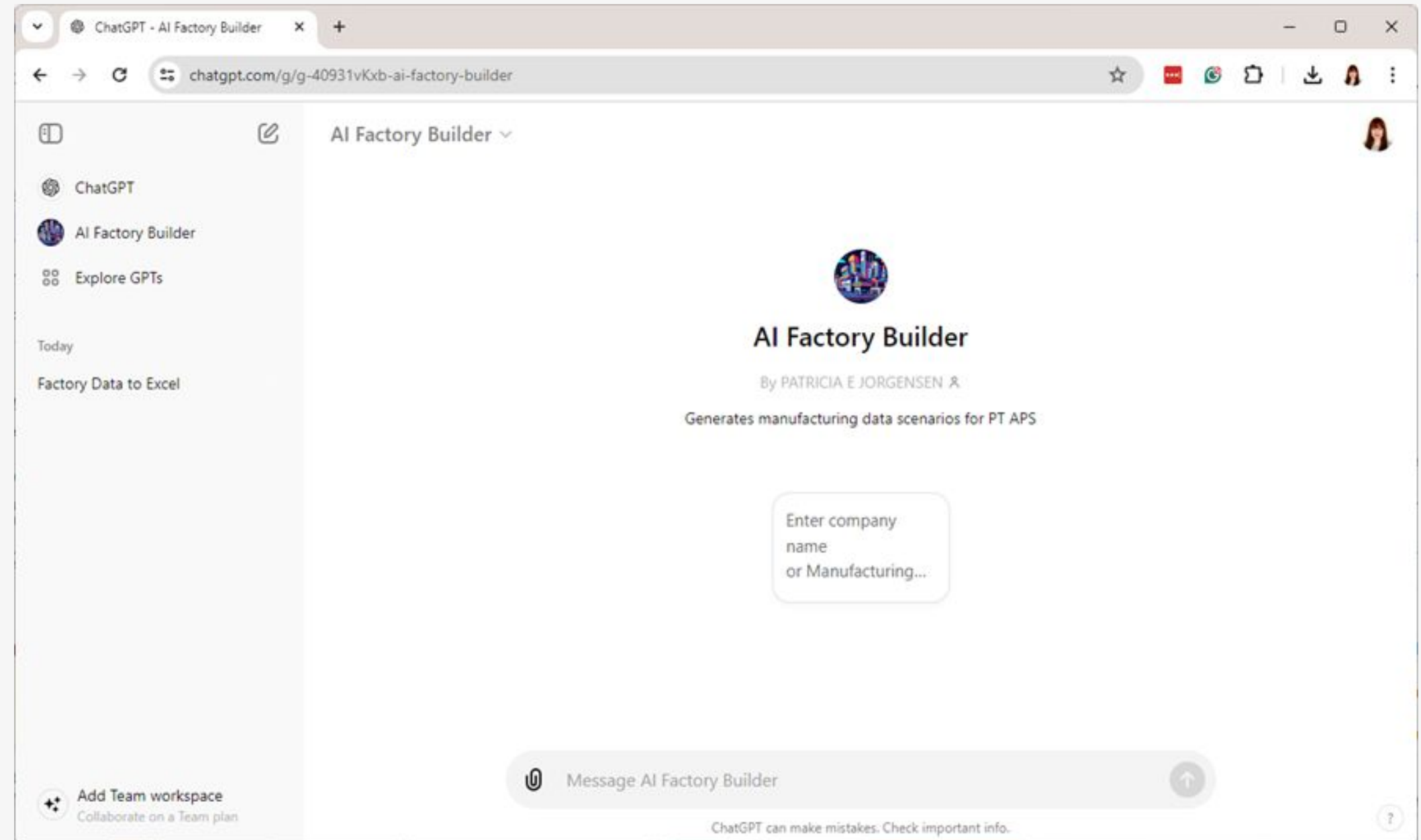


# AI Factory Builder

**Problem Statement:** It is difficult to create data for demos to prospects or for initial POC's for customers.

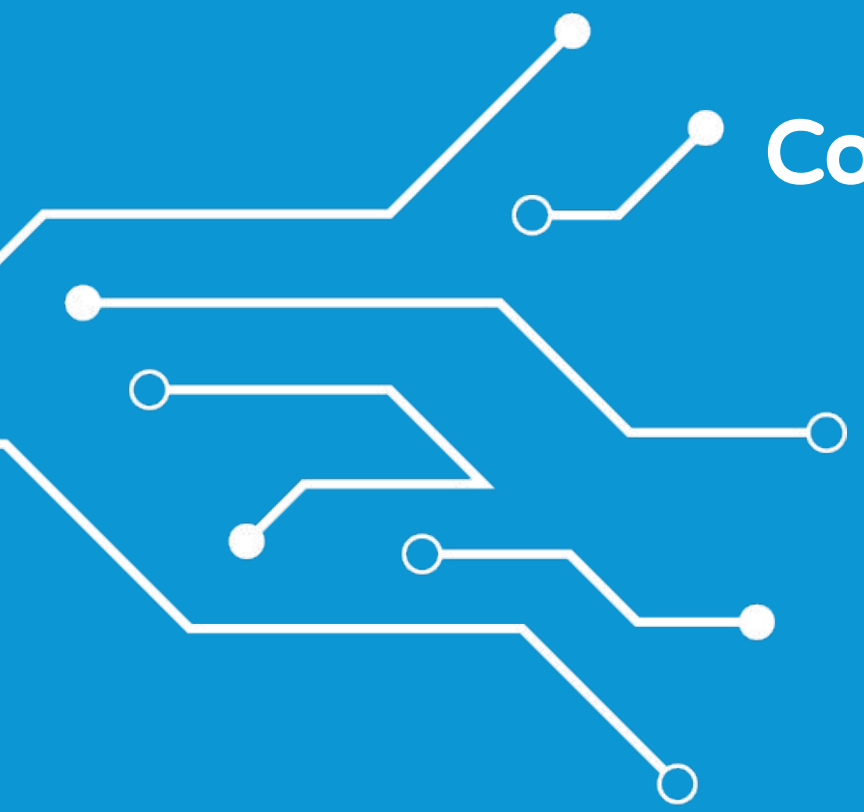
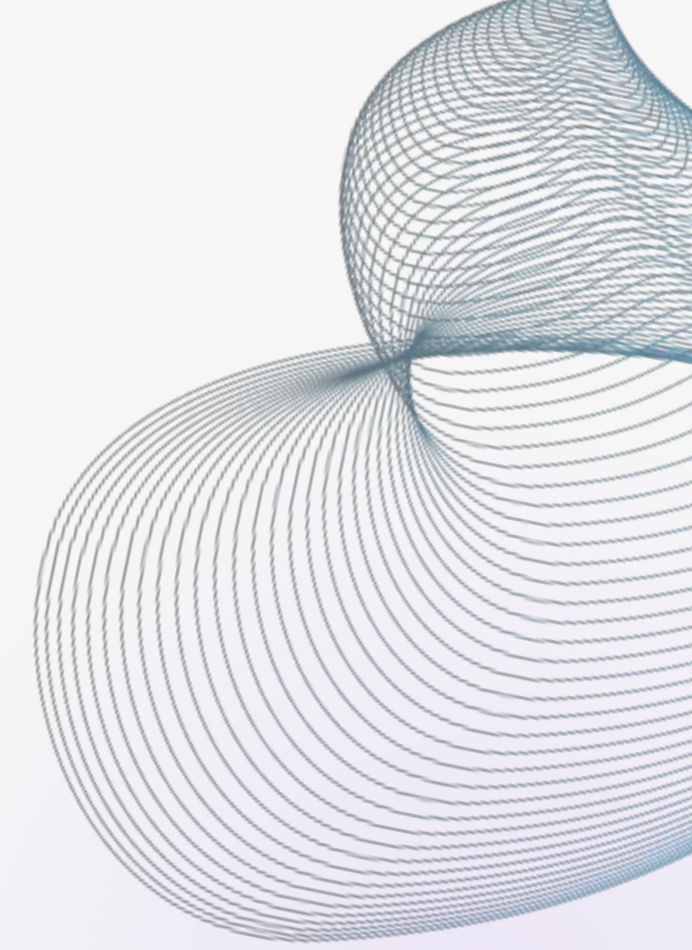
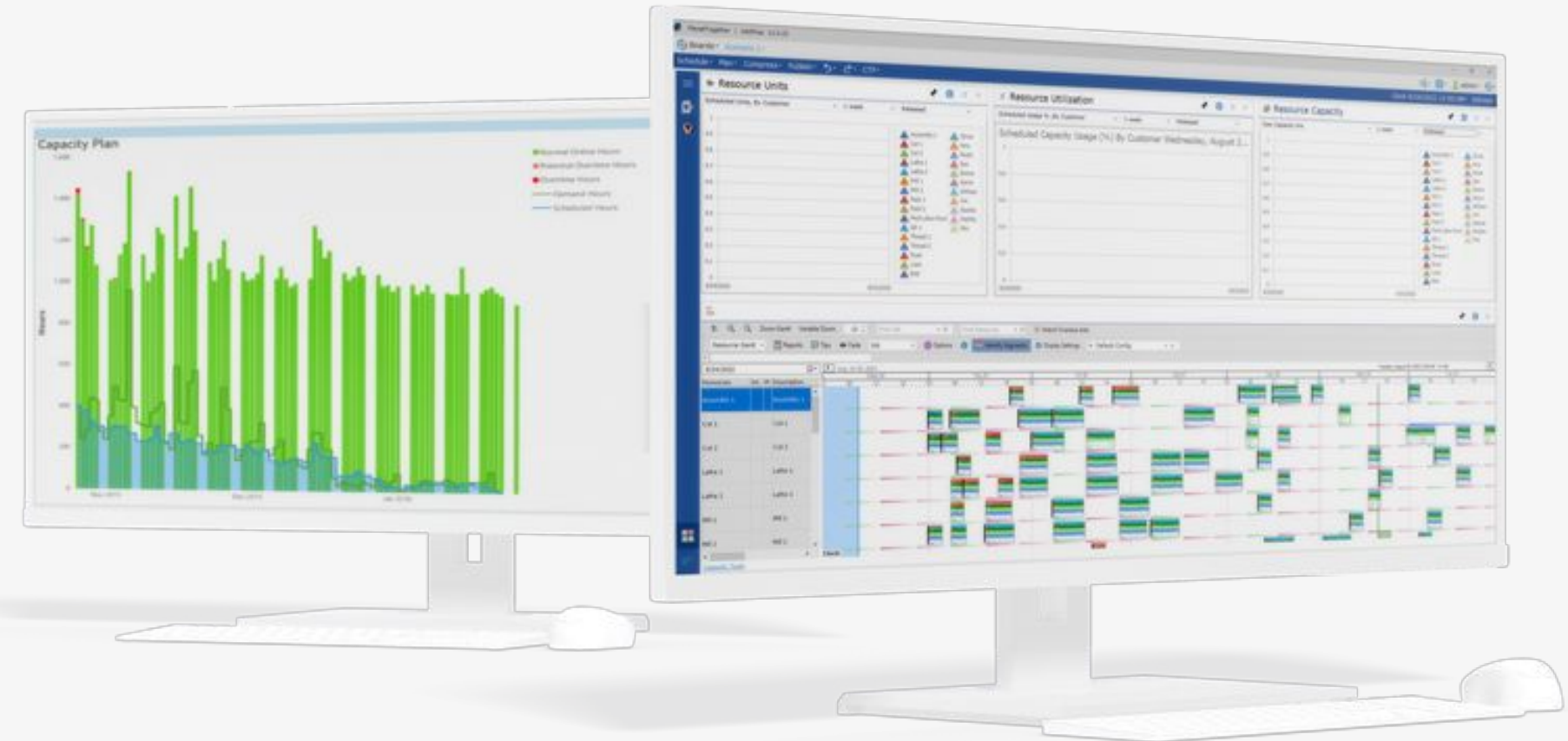
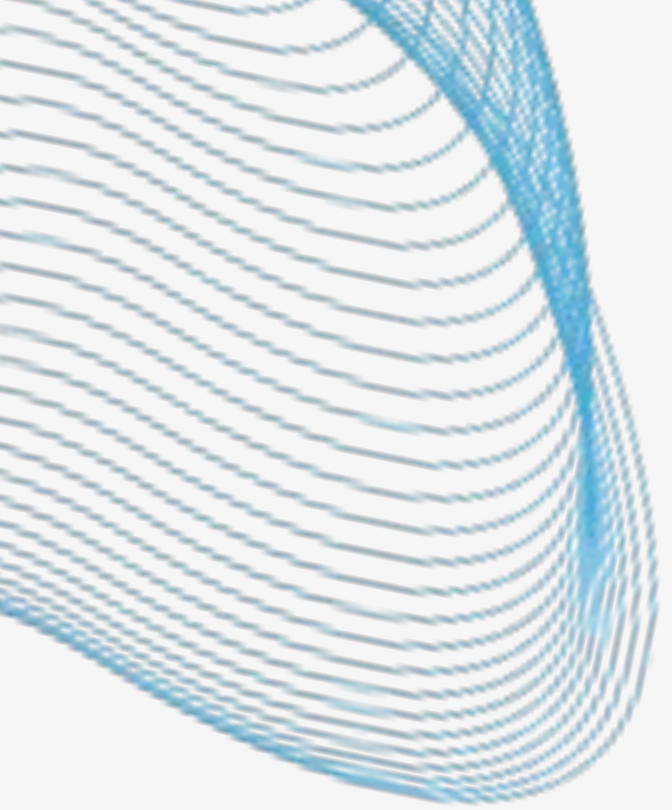
**Solution:**

- ChatGPT-enabled tool to build data for any company or vertical
- Input any customer or vertical and have AI generate an excel file that can be used with the web-based excel import



# DIVERSE MANUFACTURING CUSTOMERS





Contact us today to see the possibilities



PlanetTogether APS